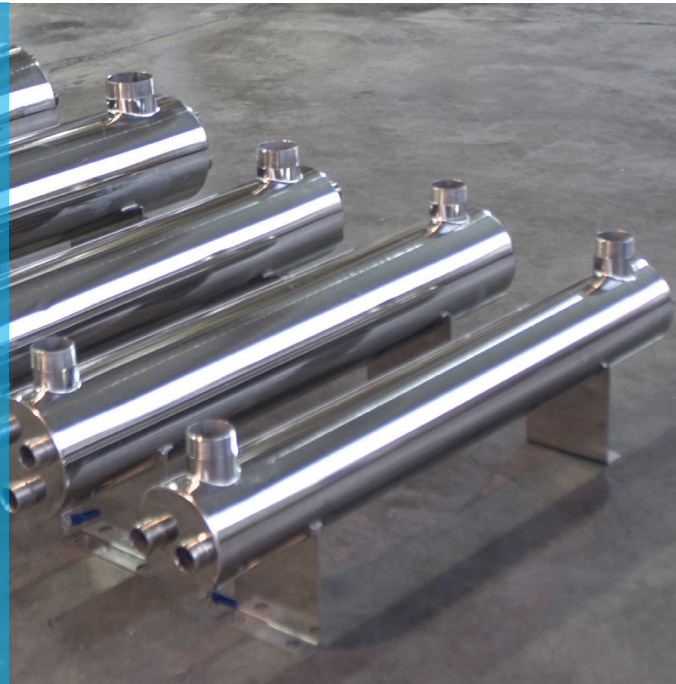


UV (ULTRAVIOLET) SYSTEMS

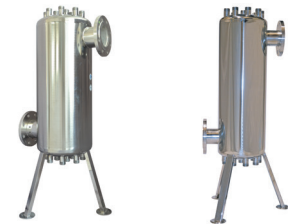
Disinfection with Ultraviolet Systems is the process for making microorganisms inactive without adding any chemical or oxidant to water



WALL TYPE MODEL & UV LAMP



E-50



ES 130 AND ABOVE MODELS

ULTRAVIOLET SYSTEMS STANDARD SPECIFICATIONS

This ultraviolet light breaks the DNA structure of microorganisms and makes them inactive. By this way, a 99.9% average ratio of disinfection productivity is supplied.

To be able to kill microorganisms with this system, ultraviolet light must directly hit over them. For this reason, before water enters in ultraviolet system, parameters such as sediment, cloudiness must be removed from water. Sand filter or cartridge filters are recommended to be used before ultraviolet.

To obtain good productivity from ultraviolet units, periodical maintenance is important. UV lamp change once a year and periodical Quartz glass cleaning depending on raw water quality must be made. In case, if this cleaning is not done, UV light affect and output of equipment will decrease.

ULTRAVIOLET SYSTEMS SPECIFICATIONS	E / ES PRO	E / ES Plus	EA
Body: SS 304 Stainless Steel	•	•	
Power Supply: 220 V 50 Hz	•	•	•
Operation Pressure: 8 Bar	•	•	
Lamp Life: 9000 Hours	•	•	•
Lamp Brand: LIGHTTECH (ISO 9001 Certified)	•	•	•
Fault Indicator (E-50 Panel not Included)	•	•	•
Analog Operating Clock (E-50 Panel not Included)	•		•
Electronic Operating Clock		•	
Voice Fault Report		•	
Alarm Relay Outlet		•	•
Warning when the Lamp Life is over		•	



PRO MODEL



PLUS - DIGITAL MODEL (MULTI LAMP)



PLUS - DIGITAL MODEL (SINGLE LAMP)



PLUS - DIGITAL MODEL (MULTI LAMP)

UV (ULTRAVIOLET) SYSTEMS

MODEL	INLET/OUTLET	CAPACITY (m ³ /hour) (300 J/m ²)	POWER (watt)	LAMP QTY	DIMENSIONS (mm)		
					W	L	H
E SERIES SS304 BODY UV SYSTEMS							
E - 50	1/2" Threaded	0,4	14	1	80	60	382
E - 105	1" Threaded	1,5	21	1	95	60	531
E - 305	1" Threaded	3	45	1	95	60	941
E - 505	1" Threaded	5	58	1	95	60	941
ES SERIES SS304 BODY UV SYSTEMS							
ES - 110	1 1/2" Threaded	10	130	2	200	945	215
ES - 115	1 1/2" Threaded	15	195	3	250	950	250
ES - 120	2" Threaded	20	260	4	300	950	310
ES - 125	2" Threaded	25	325	5	300	950	310
ES - 130	2 1/2" Threaded	30	390	6	415	430	1180
ES - 140	3" Threaded	40	520	8	465	475	1180
ES - 150	3" Threaded	50	650	10	465	475	1180
ES - 160	4" Flange	60	900	12	525	520	1180
ES - 180	4" Flange	80	1050	16	600	585	1180
ES - 200	4" Flange	100	1200	20	600	585	1180



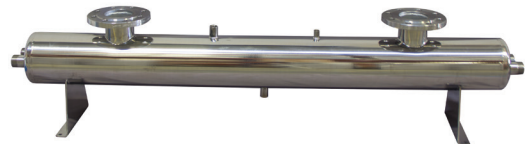
E 30 - E 50



E 105



E 305 - E 505



AMALGAM

MODEL	INLET/OUTLET	CAPACITY- m ³ /hour (300 J/m ²)	CAPACITY- m ³ /hour (400 J/m ²)	POWER (watt)	LAMP QTY
EA (AMALGAM) SERIES UV SYSTEMS					
EA - 300	2" - Threaded	25	19	320	1
EA - 600	3"- Flange	50	38	640	2
EA - 900	4"- Flange	75	57	960	3
EA - 1200	5"- Flange	100	75	1280	4
EA - 1900	6"- Flange	150	115	1920	6
EA - 2400	8"- Flange	200	150	2400	8
EA - 3600	8"- Flange	300	225	3600	12
EA - 7200	12"-Flange	600	450	7200	24